

**DATE** **MAY 26 - JUNE 5**

(No course on Sat 30 & Sun 31)

**VENUE** **HOPITAL CARDIOLOGIQUE**

Bd du Professeur Jules Leclercq  
59037 Lille cedex, France

#### REGISTRATION FEES

Full package accommodation including: a single room for 10 nights, breakfast included, registration fees for the entire workshop (2 weeks), lunches during the workshop, official dinner, travel pass for 11 days.

Package without accommodation: registration fees for the entire workshop (2 weeks), lunches during the workshop, official dinner.

Only delegates attending the full 2-week training can pass the final exam to obtain the official Lille University French Diploma. Send your CV as soon as possible to [smeyer@divine-id.com](mailto:smeyer@divine-id.com), there will be a maximum of 50 participants this year.

#### IMPORTANT DEADLINE

Registration & Hotel Booking:

**March 26, 2015**

#### TARGET AUDIENCE

Vascular Surgeons, Cardiac Surgeons, Surgeons, Interventional Radiologists & Cardiologists, Angiologists.

#### GETTING AROUND

It is situated next to A25 highway, served by 2 SNCF train stations, 2 metros and 6 bus stations

- **By plane:** Lille airport is at 10 min. from Lille Center. Buses from airport and city center every 10 min. Paris Charles de Gaulle airport is 50 min away from Lille with direct TGV, and Brussels airport is 60 min away by taxi.
- **By car:** From Paris, follow A1 highway, then take peripheries motorway. You have to follow the direction "Centre hospitalier" (A25, follow « Dunkerque »).
- **By train:** TGV, THALYS and EUROSTAR (80 min from London, 30 min. from

Brussels and 60 min. from Paris).

- **By metro:** Metro line 1. Albert Calmette Station.

There are some parkings facilities at the terminals (CHR B. Calmette and 4 Cantons) and at Porte des Postes station.

- **By bus:** There are 6 lines : 13 - 51 - 63 - 64 - 68B - 213

#### HOTELS LIST

##### **Novotel Lille Centre Grand Place\*\*\*\***

116, rue de l'Hôpital Militaire - 59800 Lille  
Tel : + 33 (0)3 28 38 53 53

The Novotel Lille Centre Grand Place is a 4-star hotel located in the center of Lille. The Grand Place, the old town and the Museum of Fine Arts are nearby. It is just a 10 min. walk to the train stations. With its 104 rooms, a restaurant, a bar and 4 rooms for meetings and seminars, the hotel is just as suitable for business travel as it is for a weekend in Lille as a couple or with the family. Services: relaxation and fitness centre. Distance by metro: 30 min.

##### **Ibis Lille Centre Gares\*\*\***

29, avenue Charles St Venant - 59800 Lille  
Tél : + 33 (0)3 28 36 30 40

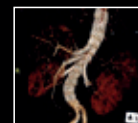
The Hotel Ibis Lille Centre Gares offers comfortable rooms and is located at Lille Flandres train station, close to Lille Europe train station. It is ideal for both business travel and vacations, and offers easy access to the main tourist attractions: the Grand Place, old Lille, Lille Grand Palais, the Zénith Arena, the Palais des Beaux Arts fine art museum, the Louvre-Lens museum, the Tri Postal, Saint-Sauveur station, and the Stade Pierre Mauroy. Services: private indoor parking, free WIFI. Distance by metro: 25 min.

##### **Ibis Budget Lille Centre\*\***

10, rue de Courtrai - 59000 Lille  
Tél : + 33 (0)8 92 68 30 78

In the heart of the old town of Vieux Lille, next to the Porte de Gand, the ibis budget Lille Centre (formerly an Etap Hotel) is a 10 min walk from 2 train stations and the Grand Place. In an ideal location for visiting the city, this fully renovated hotel offers rooms for 1, 2 or 3 people at very affordable rates, as well as an underground private car park. Services : private indoor parking, WIFI. Distance by metro: 30 min.

# Advanced endovascular aortic workshop



#### COURSE DIRECTORS

Stéphan Haulon, *Lille, France*

Tara Mastracci, *London, United Kingdom*

Timothy Resch, *Malmö, Sweden*

LIMITED SEATS

# 2015

# CHU Lille, FRANCE

# May 26 - June 5

**ORGANIZATION:** divine [id] agency • [www.divine-id.com](http://www.divine-id.com)

• Stéphanie Meyer: [smeyer@divine-id.com](mailto:smeyer@divine-id.com) • Mob. +33 (0) 646 10 48 26

• Vérane Bergeron Moreau: [vbergeron@divine-id.com](mailto:vbergeron@divine-id.com)

• 17, rue Venture - 13001 Marseille, France • Tel. +33 (0) 491 57 19 60 • Fax +33 (0) 491 57 19 61

divine  
**[id]**



The aim of the workshop is to provide state-of-the-art guidance on basic and advanced endovascular aortic intervention, including developments for the aortic arch and TAVI. Attendees will learn 'what to do and how to do it' through daily live case demonstrations, hands-on workshops (including bench endograft and percutaneous closure system deployment), and training in 3D workstation use and advanced imaging applications. The faculties are experts in this field and will provide the latest guidance on patient selection, endograft planning and implantation tips and tricks. The promising results that can be achieved with EVAR, TEVAR, and branched and fenestrated endografting will be shown. An official Lille University French diploma will be awarded to the candidates who successfully pass the final exam.

Stéphane Haulon

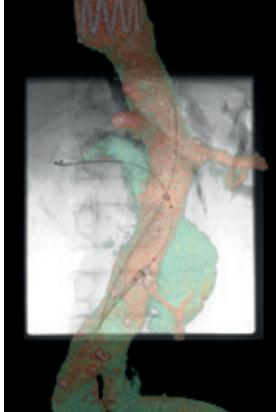
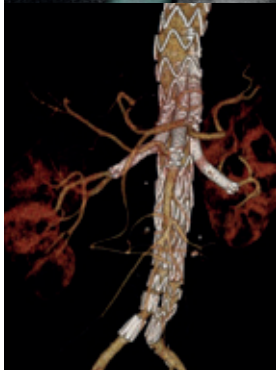
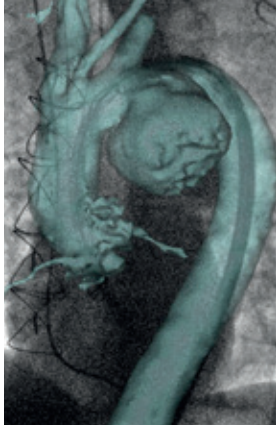
#### COURSE DIRECTORS

Stéphane Haulon, *Lille, France*  
 Tara Mastracci, *London, United Kingdom*  
 Timothy Resch, *Malmö, Sweden*

#### INTERNATIONAL FACULTY

#### CONTENT & TOPICS

- Live cases from the hybrid room every day
- Hands-on workshops
- Training in 3D workstation use
- Lectures from international endovascular experts
- Dedicated sessions (live cases + lectures) on EVAR, TEVAR, Iliac Branch, FEVAR and BEVAR, Percutaneous closure systems
- Complex cases sessions (live cases + lectures) on dissections and arch aneurysms



# Advanced endovascular aortic workshop

## Program

Full training on the following topics:

- EVAR, Iliac Branch
- TEVAR for thoracic aneurysms and acute and chronic dissections
- Fenestrated endografts (FEVAR) for para renal and Thoracoabdominal aneurysms (TAAA)
- Branched endografts (BEVAR) for TAAA and arch aneurysms
- TAVI
- 3D Workstations
- Hybrid Rooms, advanced imaging applications
- Percutaneous closure systems

Including:

- 2 live cases from the Hybrid Room every day
- Lectures on patient's selection, endograft sizing and implantation, literature analysis, complications' diagnostic and treatment, tips & tricks, complex cases discussion
- Hands-on workshop including 3D workstations training, endografts and closure system deployment

Official dinner included

## Rates

	Novotel Lille Centre Grand Place****	Ibis Centre Gare***	Ibis Budget Lille Centre**
<b>Full Package / 2 weeks</b>	4 600 €	4 300 €	3 950 €
Half board in the hotel in addition	26 € per dinner	20,30€ per dinner	No restaurant

<b>Registration package without accommodation / 2 weeks</b>	3 500 €
---	---------

<b>Registration package without accommodation / 1 week</b>	3 200 €
--	---------

Only delegates attending the full 2-week training can pass the final exam to obtain the official Lille University French diploma in Advanced Aortic Endografting

Register online at [www.event.divine-id.com](http://www.event.divine-id.com)

Send your CV to [smeyer@divine-id.com](mailto:smeyer@divine-id.com)